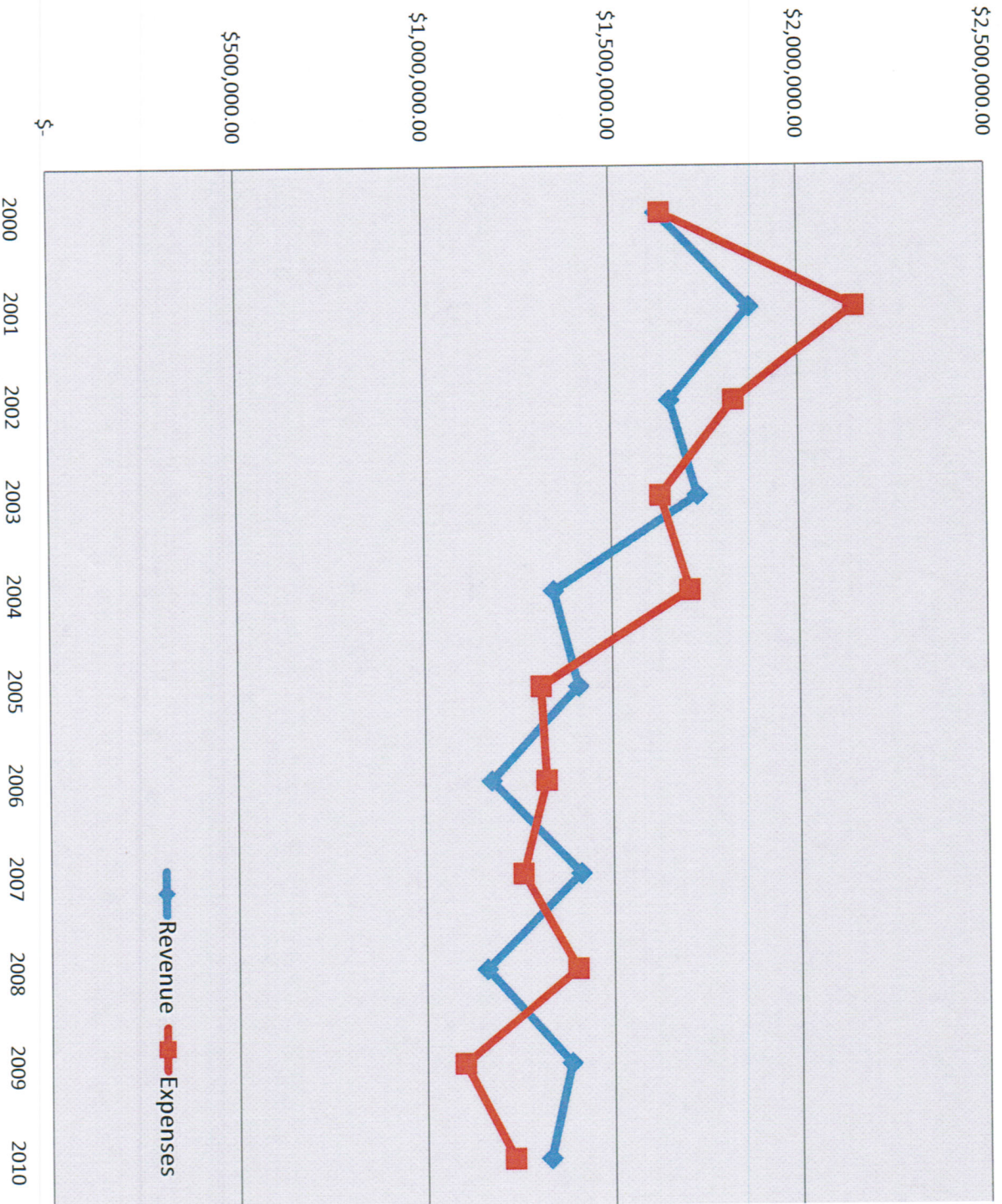


Randolph County Road & Bridge Revenue/Expenses

Year	Revenue	Expenses	End of Year Balance
2000	\$ 1,625,811.00	\$ 1,635,216.00	\$ 1,198,770.06
2001	\$ 1,870,242.00	\$ 2,151,275.00	\$ 917,736.70
2002	\$ 1,656,811.00	\$ 1,828,284.00	\$ 872,645.06
2003	\$ 1,730,468.00	\$ 1,631,008.00	\$ 845,722.77
2004	\$ 1,343,977.00	\$ 1,708,489.00	\$ 481,210.94
2005	\$ 1,408,213.00	\$ 1,308,661.00	\$ 580,762.80
2006	\$ 1,175,452.00	\$ 1,322,437.00	\$ 433,777.52
2007	\$ 1,413,107.00	\$ 1,258,586.00	\$ 588,298.39
2008	\$ 1,160,051.00	\$ 1,402,888.00	\$ 345,462.26
2009	\$ 1,384,525.99	\$ 1,100,501.33	\$ 656,885.63
2010	\$ 1,328,500.49	\$ 1,232,192.67	\$ 752,716.67

Randolph County Road and Bridge



RANDOLPH COUNTY GRADER HOURS

Grader #	Brand	Year	Hours of Use
39	Caterpillar	1985	10421
15	Caterpillar	1987	12389
20	Caterpillar	1995	16430
22	Caterpillar	1995	14515
30	Caterpillar	2000	13116
21	Caterpillar	2001	10557
32	Caterpillar	2002	9023
7	Caterpillar	2003	8006
13	John Deere	2004	6416
29	John Deere	2009	2053

6.15.11